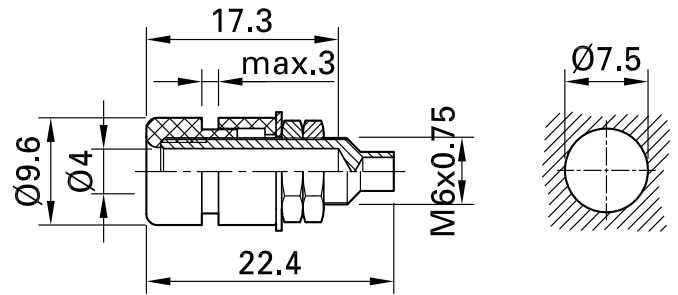


EBI-40



Item number 69.8321-*

Insulated, Ø 4 mm, rigid. Machined brass. The socket can be screw-mounted in predrilled panels. Threaded bolt M6x0.75 and solder connection.

Technical data	
Diameter of plug system	4 mm
Rated Values	30 VAC, 20 A / 60 VDC, 20 A
Surface treatment electrical contact	Ni
Base material electrical contact	CuZn
Colours *	21 22 23 24 25 29
Thread	M6x0,75
Test accessory acc. to	IEC EN 61010-031