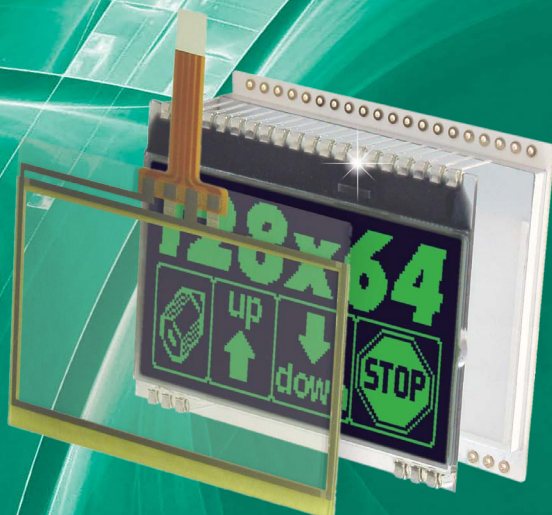
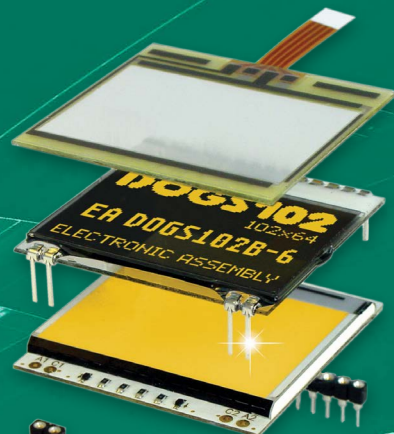


## DOG Series Slimline Displays with Pins

- super flat: 2.0~6.5mm
- Graphic 102x64 .. 128x64 .. 240x64 .. 240x128
- Character 1x8, 2x16, 3x16, 4x10, 4x20
- real 3.3V operation
- SPI interface, low power: from 150  $\mu$ A
- display and backlight separate
- white LED B/L do run from 3 mA
- Standard displays



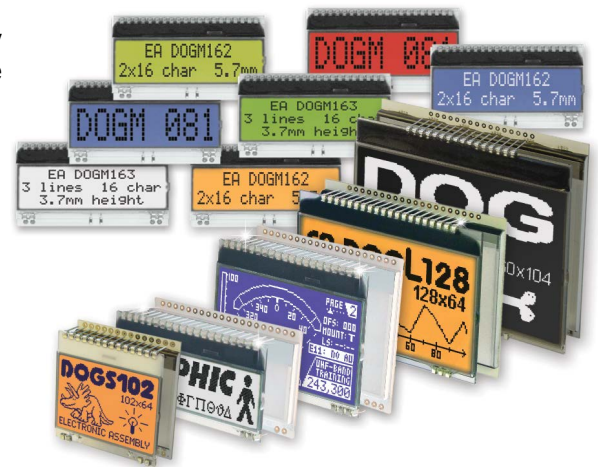
# Flexible in Design

## Text and Graphic + SPI + 3.3V

### „Why again a new display series?“

.. you may think to yourself. Quite so, but this series is a completely new development, offering a range of innovations and benefits like no other:

- \* 7 Graphic displays from 102x64 up to 240x128
- \* 4 Character displays 1x8, 2x16, 3x16, 4x10(2x10), 4x20
- \* single supply +3.3V operation
- \* alternative 5V operation (1x8, 2x16, 3x16)
- \* SPI interface (character also 4-/8-bit interface)
- \* I<sup>2</sup>C and SPI for EA DOGXL160-7, DOGM240-6, DOGXL240-7
- \* can be soldered directly into the PCB
- \* flat with 2.0 mm up to 5.8/6.5mm with backlight
- \* outline dimensions from 39x41mm up to 94x67mm
- \* T<sub>op.</sub> -20..+70°C, integrated temperature compensation
- \* no minimum quantity, shortest delivery time

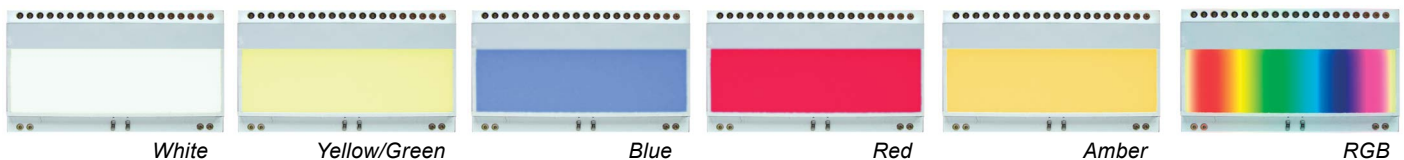


### Just put together the display you want

You prefer a standard display but with an individual look? That's the reason why we separated the display and the illumination. We can supply you with both as standard products, even in small quantities. But the unit only becomes your own personal solution when you combine the two during production. No screws and no cable are required. Simply clip the display and the backlight unit together and you have up to 63 possible combinations. For the graphic displays there is an analogue touch panel available also.

### Different backlight units

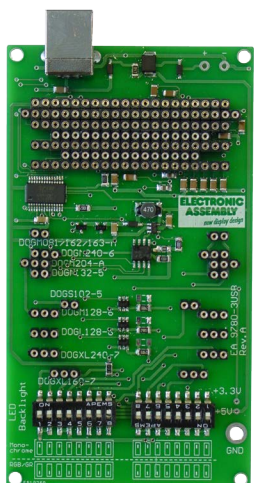
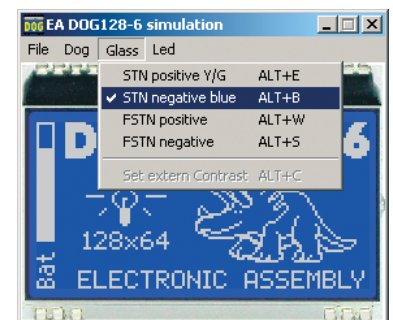
There is a choice of up to 7 different illumination colors to suit the most diverse designs. The most efficient and at the same time the brightest illumination type is the white one. With the RGB type all colors can be set individually.



### Simulation for Windows

Already before any purchase, with the gratis simulator software all displays and colors can be simulated on the PC. It's possible to display individual text and pictures. The Simulator is free for download from our website

[http://www.lcd-module.de/deu/disk/startdog\\_V33.zip](http://www.lcd-module.de/deu/disk/startdog_V33.zip)



### USB Test board EA 9780-3USB

For a quick and easy start we do provide an USB test board for PC connection. The board comes with an USB cable and the above mentioned Windows software. With the test board text and pictures (BMP) can be displayed immediately. The test board is good for all EA DOG displays.

### Character set and FontEditor

There are lots of character sets available as the EA USBSTICK-FONT. The FontEditor software allows to edit all fonts and to create new ones (e.g. cyrillic, greece, hebrew). When the USB Testboard is connected, you are able to watch the just edited character live on the display. An export function for C- and Basic source codes is included aswell.

